



## Exterior Wall Members & Accessories

# Exterior Wall Members



## JamStud®

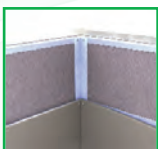
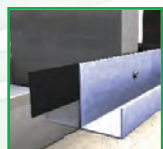
JamStud® Wall Opening Jamb Member  
JamStud® Header/Sill Member



## Standard Stud & Track

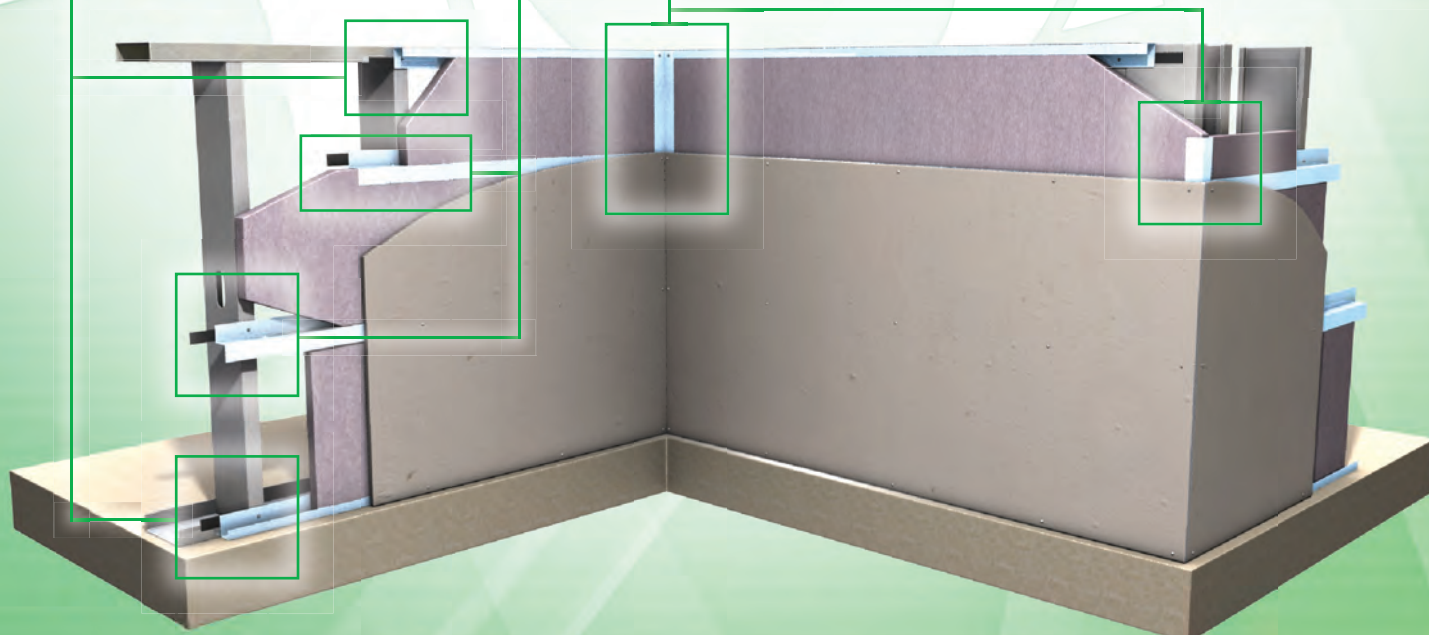
Standard Stud & Track General Information

# Exterior Wall Accessories



## Continuous Rigid Insulation Framing

ThermaFast® J-Track General Information  
ThermaFast® Z-Track General Information  
ThermaFast® Corner Angle General Information





# Curtain Wall Members

JamStud®

## Introduction:

JamStud® is a revolutionary addition to the light gauge steel stud industry, producing significant economies in both design and installation when compared with conventional "C" Shaped studs. JamStud's unique configuration delivers increased strength and stiffness, minimizing or eliminating the use of built-up jamb and header sections in a curtain wall assembly. Available in all common wall stud depths, JamStud streamlines the design and construction process. JamStud's shape is easily differentiated from the typical c-shape, enabling the selection of the most optimal member sizes to fit project conditions.

## Quality

- Increases load capacity over a standard "C-shaped" stud of the same thickness, reducing overall materials needed (single "JAM" from double or triple "C-Shape" common)
- Increased stiffness for deflection
- Increased load capacity enables selection of optimal thickness of curtain wall studs

## Value

- Simplified jamb and header design
- Lighter weight results in shipping efficiencies and easier handling
- Provides a flat surface for attachment of door or window frame, requiring no additional track
- No welding or fastening built-up members together

## JamStud® Wall Opening Jamb Member

### Nomenclature

**600JAM250-43, 50ksi**

Overall Depth      JAM JamStud® Section      Flange Width      Material Thickness

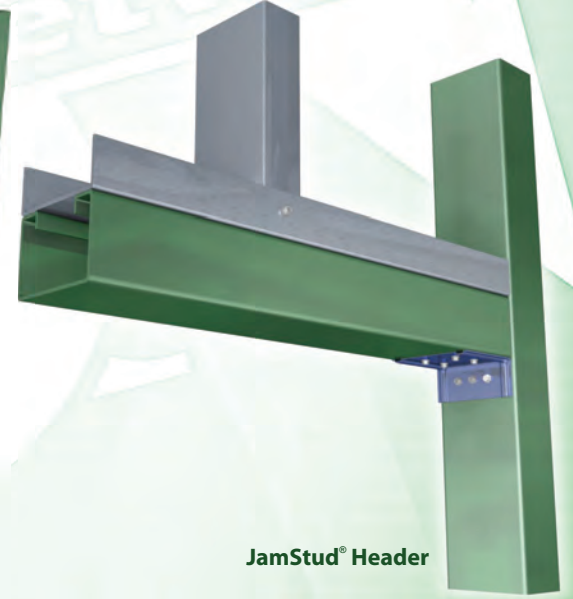
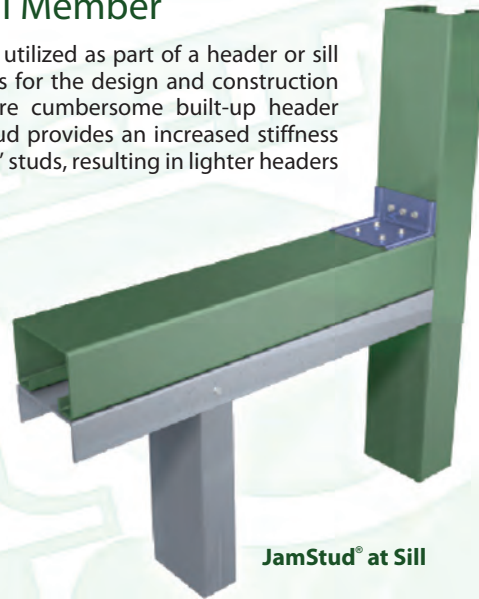


## JamStud® Header/Sill Member

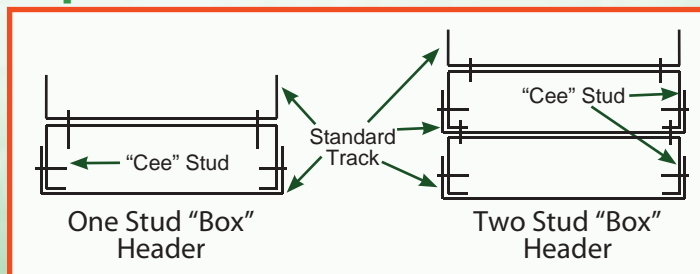
JamStud delivers exceptional value when utilized as part of a header or sill assembly. JamStud's unique shape allows for the design and construction of a lightweight header versus the more cumbersome built-up header assemblies. Oriented horizontally, JamStud provides an increased stiffness and strength compared with standard 'cee' studs, resulting in lighter headers which require less labor to install.

### Features

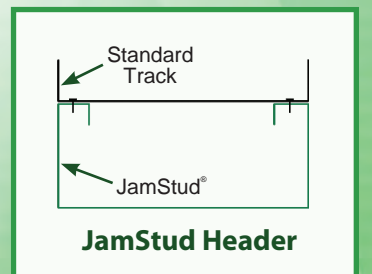
- Eliminates the need for Built up jambs
- Simple Inspection
- Speeds installation
- Fewer fasteners



## Replace This:



## With This:



\* The top track seen in the assemblies above is to capture the cripple studs above and does not factor in the design of the header.



# Curtain Wall Members

## Standard Stud & Track

### Introduction:

TSN provides solutions for all standard light steel framing applications, including load-bearing mid-rise construction systems, curtain wall systems, rigid connectors, vertical deflection connectors, lateral drift connectors and anchorage connectors. Substantial effort has been made by the industry to standardize construction practices to ensure the positive connections of light steel framing components. Toward this end, TSN products have undergone extensive field and laboratory testing to achieve complete solutions for both designers and installers. In an effort to becoming a full service manufacturer, we offer standard C-shaped studs & track in addition to our other proprietary products.

### Quality

- Utilizes only certified 33ksi and 50ksi steel
- All material utilized by TSN is traceable

### Value

- Use with all TSN products together as a system, in all applications

## Standard Stud & Track General Information

# 600S162-54

Overall Depth (in) x 100

Ex: 6" = 600

For all "T" sections,  
member depth is inside  
to inside dimension

Flange Width (in) x 100

Ex: 1.625" = 162

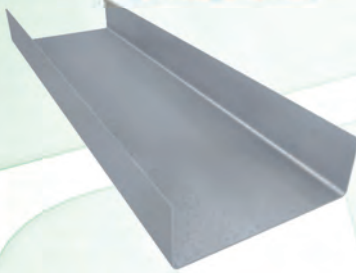
Style

Ex: T = Track Section  
S = Stud or Joist Section

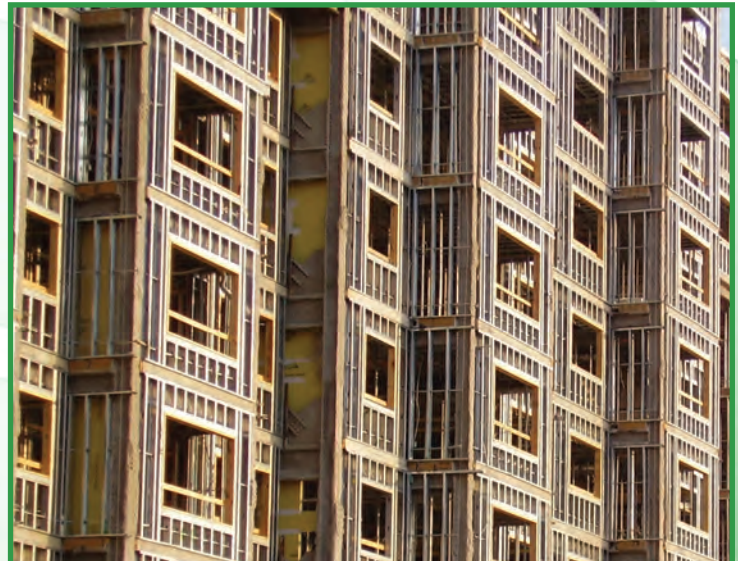
Material Thickness (mils)

Ex: 0.054" = 54 mils (16ga)

Material Thickness is the minimum base  
metal thickness in mils, representing  
95% of the design thickness.



## JamStud® Project Spotlight



Use of JamStud as jambs and openings on this 8 story project saved the contractor significant time and labor expenses. With the high amount of openings (500+) it is easy to see how JamStud positively benefits installation. Use of JamStud in lieu of built-up jambs and headers cut materials by over 50% and reduced labor associated with the built-up materials.

Ask about our **Design Assist Services** today to see how **JamStud®** can save you **thousands** in reduced material and labor!



# Curtain Wall Accessories

# ThermaFast® Continuous Rigid Insulation Framing System

## Introduction:

Recent changes in the IECC Energy Conservation Code and ASHRAE Standard 90.1 necessitate the installation of 1 to 4 inches of continuous rigid insulation layer on the outside surface of exterior metal stud walls. Existing building component systems lack sufficient accommodation for cladding assemblies, like cement board panels, siding, metal panels, EIFS, stucco, etc. since there is no viable means to attach to a stable substrate like plywood or gypsum sheathing over the thick rigid insulation layer other than long and unstable cantilevered screws.

Over time, and lacking a product that addressed this need, Architects have either reduced or abandoned altogether the use of such cladding in their designs, waiting for the steel framing industry to provide a solution.

TSN's ThermaFast® Rigid Insulation Framing system is "The" solution. ThermaFast is an engineered installer-friendly set of steel framing tracks and angles designed to be an integral part of the continuous rigid insulation, and at the same time provide a stable component for direct substrate attachment.

## Quality

- Unique foam engagement feature keeps rigid insulation from sliding or popping out of place without the need for specialty fasteners with washers
- Wide flanges for increased target area for screws when installing sheathing or alternative finishes
- Mill-certified high strength steel and added galvanized coating layer

## Value

- Pre-engineered framing system to support weight of rigid insulation, cladding material, and wind loads
- 1" thermal tape comes preinstalled to each track for an integrated thermal brake between the steel studs and continuous insulation
- System utilizes typical screws to attach rigid foam insulation

# ThermaFast® Rigid Insulation Framing General Information

## Nomenclature

# 200ZT-54, 50 ksi

**Rigid Foam Insulation Depth (in) x 100**

Ex: 2.0" = 200

For all "CA" sections, this dimension is the leg length  
ex: 2" leg = 200

**Style**

Ex: ZT = Z-Track Section

Other designators are as follows:

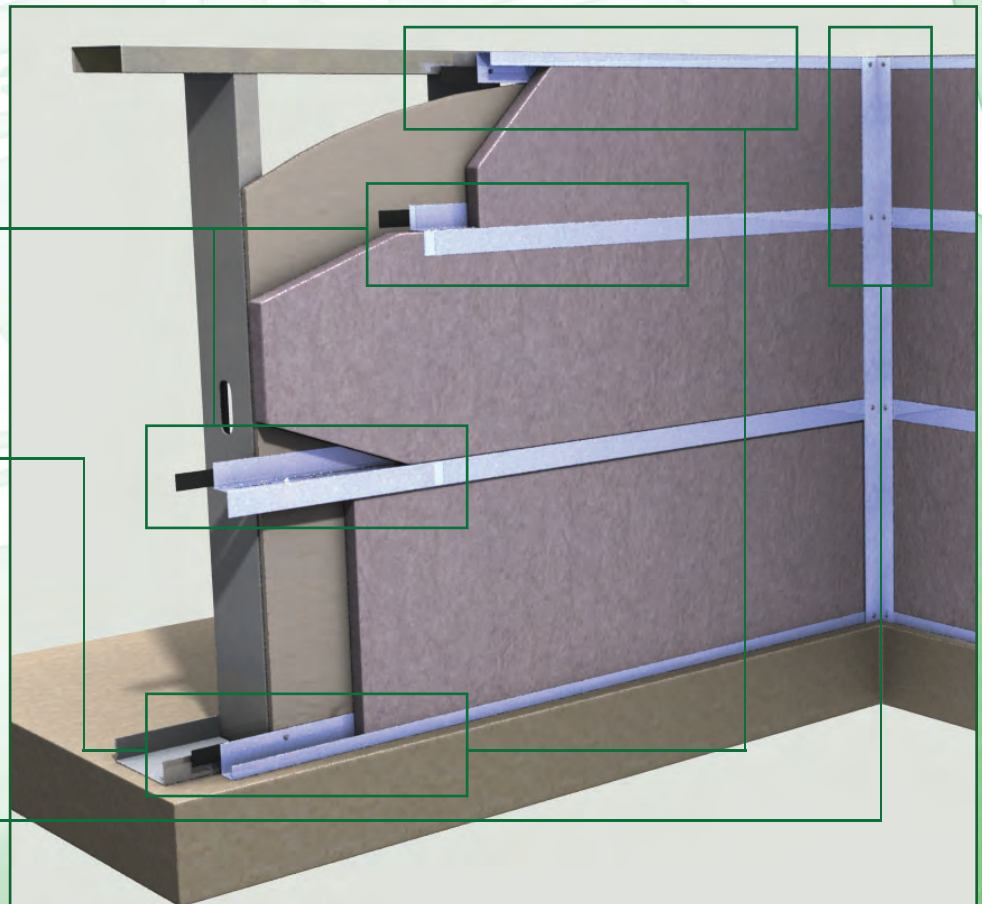
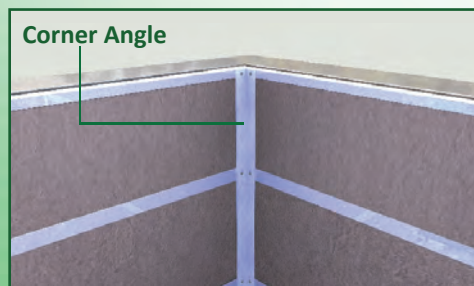
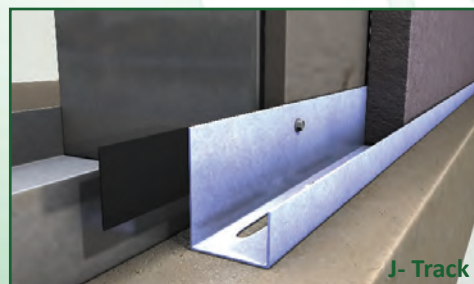
JT = J-Track

CA = Corner Angle

**Material Thickness (mils)**  
Ex: 0.054" = 54 mils (16ga)

Material Thickness is the minimum base metal thickness in mils, representing 95% of the design thickness.

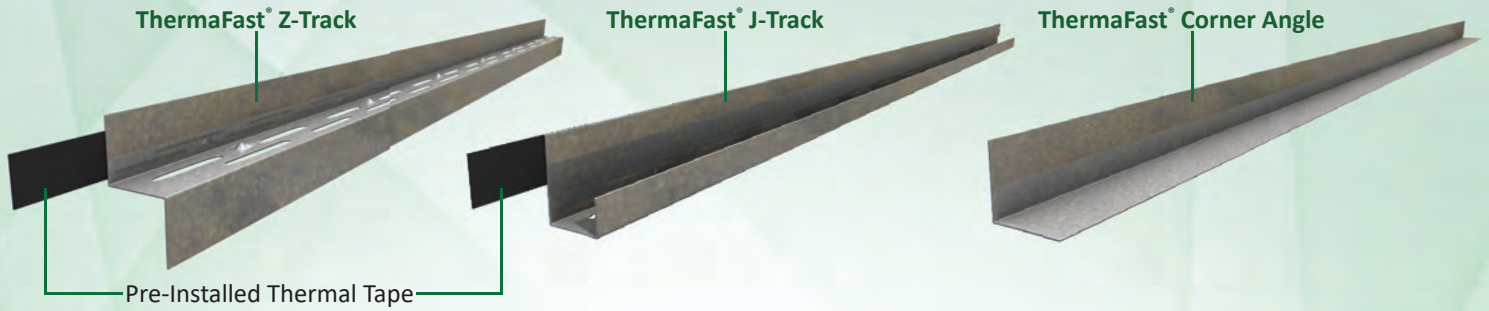
## System Configuration





# Curtain Wall Accessories ThermaFast® Rigid Insulation Framing System

## System Components



## ThermaFast® J-Track General Information

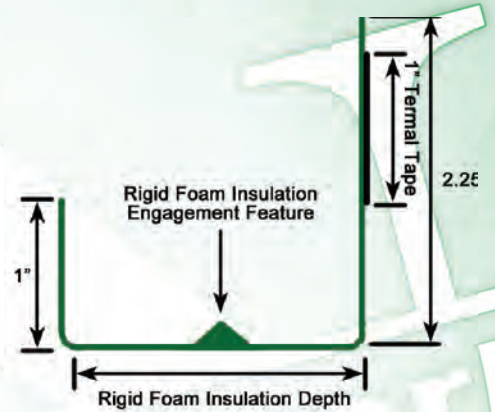
**150JT-54, 50 ksi**

Rigid Foam Insulation Depth

JT

Material Thickness

ThermaFast® J-Track



## ThermaFast® Z-Track General Information

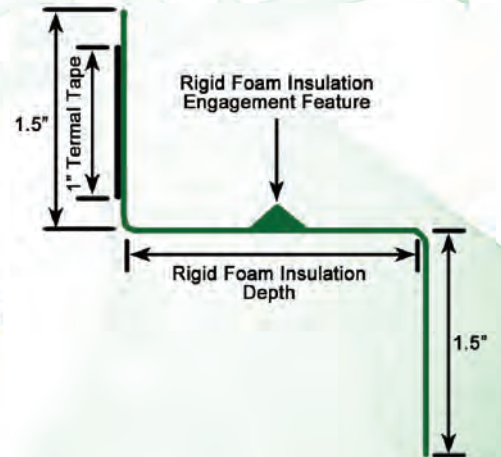
**200ZT-54, 50 ksi**

Rigid Foam Insulation Depth

ZT

Material Thickness

ThermaFast® Z-Track



## ThermaFast® Corner Angle General Information

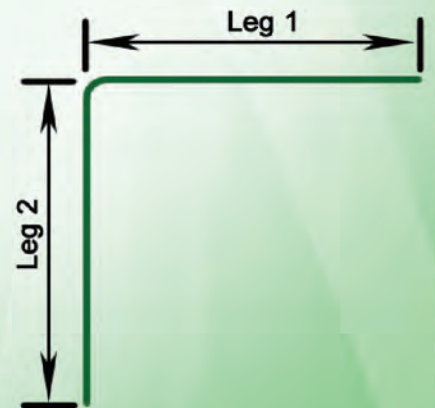
**200CA-54, 50 ksi**

Leg Length

CA

Material Thickness

ThermaFast® Corner Angle





# Terms, Conditions, and Limited Warranty

## Product Use

Products in this catalog are designed and manufactured for the specific purposes shown, and should not be used in other applications unless approved by a qualified design professional. All modifications to products or changes in installation procedures should be made by a qualified design professional. The performance of such modified products or altered installation procedures is the sole responsibility of the design professional or installation contractor. The installation contractor and/or qualified design professional are responsible for installing all products in accordance with relevant specifications and building codes.

Customers modifying products or installation procedures, or designing Custom products for fabrication by The Steel Network, Inc. ("TSN") shall, regardless of specific instructions to the user, indemnify, defend, and hold TSN harmless for any and all claimed loss or damage occasioned in whole or in part by Custom or modified products or installation procedures.

Modifications to TSN products, improper loading or installation procedures, or deviations from recommended applications will affect TSN products' load-carrying capacities. TSN products are fabricated from hot-dipped galvanized steel for corrosion protection but will corrode and lose load-carrying capacity if exposed to salt air, corrosive fire-retardant chemicals, fertilizers, pressure treated wood or other substances that may adversely affect steel or its galvanized coating. This document edition reflects changes in the allowable loads and configurations of some of TSN's products. This information supercedes information in earlier documents or technical reports. All earlier documents or technical reports should be discarded and reference made exclusively to this edition. TSN may correct any clerical or typographical errors. All sales are subject to TSN's standard terms and conditions of sale.

## Limited Warranty

TSN warrants its products to be free from defects in material or workmanship at the time of shipment. TSN standard catalog products are warranted for adequacy of design when used in accordance with design limits in this catalog and properly specified and installed. TSN products shall not be substituted with non-TSN products if it is part of a system. Substitution of a TSN product will immediately void any warranty claim made by Purchaser. This warranty excludes uses not in compliance with specific applications and installation procedures set forth in this catalog. Warranty claims must be made by Purchaser in writing within ninety (90) days of receipt of the products.

All warranty obligations of TSN shall be limited, at the sole discretion of TSN, to repair or replace the defective product(s). These remedies shall constitute TSN's sole obligation and sole remedy of purchaser under this warranty. In no event will TSN be responsible for incidental, consequential, indirect, exemplary, incidental, special, consequential, or punitive damages, or other losses or damages however caused, including, but not limited to, installation costs, lost revenue or lost profits. TSN's liability for damages shall in no event exceed the applicable portion of the purchase price for defective product(s).

Product defects that arise from acts of God, accidents, misuse, misapplication, improper installation, storage damage, negligence, or modification to product(s) or its components are specifically excluded from this warranty. Product defects that arise from Purchaser providing incorrect information to TSN, including but not limited to incorrect specifications such as incorrect dimensions, designs and/or loads, are also specifically excluded from this warranty. TSN does not authorize any person or party to assume or create for it any other obligation or liability in connection with Products except as set forth herein.

This Warranty is expressly in lieu of all other warranties, expressed or implied, including any warranties of merchantability or fitness for a particular purpose, all such other warranties being hereby expressly excluded.

## Patented Technology

BackIt®, BridgeBar®, BridgeClip®, BuckleBridge®, CircleTrak®, DriftClip®, DriftCorner®, DriftTrak®, GripClip®, 600JAM®, 800JAM®, JamStud®, MidWall™, MasterClip®, NotchTrak®, PrimeWall®, 600SG®, 800SG®, SigmaStud®, SigmaTrak®, Step-Bushing Technology™, StiffClip®, StiffWall®, ThermaFast®, TightStrap®, VertiClip®, and VertiTrack® are trademarked products, and are patented or patent-pending technologies of TSN. Numerous TSN design configurations are patented and/or patent pending and are protected under US and International patent laws. Patent numbers include: #4,970,410; #4,970,411; #4,970,412; #4,970,413; #5,079,710; #5,467,566; #5,904,023; #5,906,080; #6,612,087; #6,701,689; #6,892,504; #7,104,024; #7,503,150; #7,559,519; #7,596,921; #7,634,889; #7,788,878; #7,832,162; #7,836,657; #8,132,383; #8,181,419; #8,205,402; #8,387,321 and #8,683,770.

## Contact Information

### North Carolina

The Steel Network, Inc.  
2012 T W Alexander Drive  
P.O. Box 13887  
Durham, NC 27709  
Phone: (919) 845-1025  
Fax: (888) 474-4877

### Texas

The Steel Network, Inc.  
600 Lemens Avenue  
Suite 120  
Hutto, TX 78634  
Phone: (512) 642-9603  
Fax: (512) 857-1663

### Nevada

The Steel Network, Inc.  
1650 Helm Drive  
Suite 1000 - 1200  
Las Vegas, NV 89119  
Phone: (702) 643-4330  
Fax: (702) 643-4331



**Web Site:** [www.steelnetwork.com](http://www.steelnetwork.com)  
**E-mail:** [support@steelnetwork.com](mailto:support@steelnetwork.com)

**Toll Free Nationwide Phone**  
**(888) 474-4876**

Copyright © 2020 The Steel Network Inc. All rights reserved. No part of this publication may be reproduced in whole or in part by any method without the prior written consent of The Steel Network, Inc.





**TSSA**  
**The Steel Network**

®